

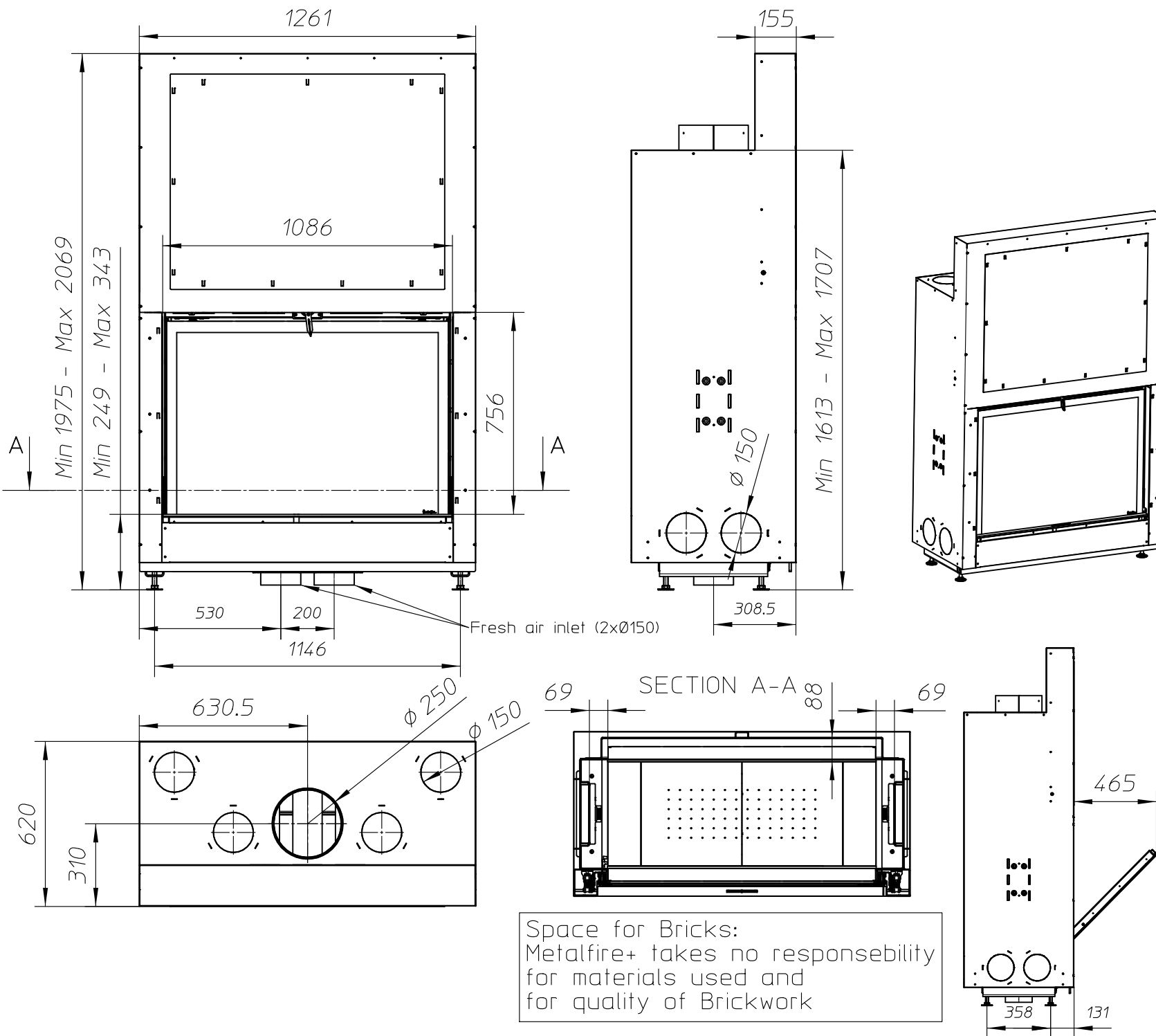
ULTIME D MF 1050-75 WHE 1S BRICK

Dimensions (mm)

- combustion opening WxH: 1086 x 756
- external WxDxH: 1261 x 620 x 2069
- fresh air intake: 2 x Ø150
- flue gas outlet: Ø250

Technical Data

- ecolabel: A
- capacity: 25.2kW
- efficiency: 79%
- CO (volume with 13%O₂): 0.05%
- dust (volume with 13%O₂): 30mg/Nm³
- weight: 400kg
- convection air inlet: min.700cm² (4 x Ø150)
- convection air outlet: min.700cm² (4 x Ø150)



Space for Bricks:
Metalfire+ takes no responsibility
for materials used and
for quality of Brickwork

First aid and technical support:

- support@metalfire.eu
- +32 9 261 51 90

scale 1:20

www.metalfire.eu EN 13229

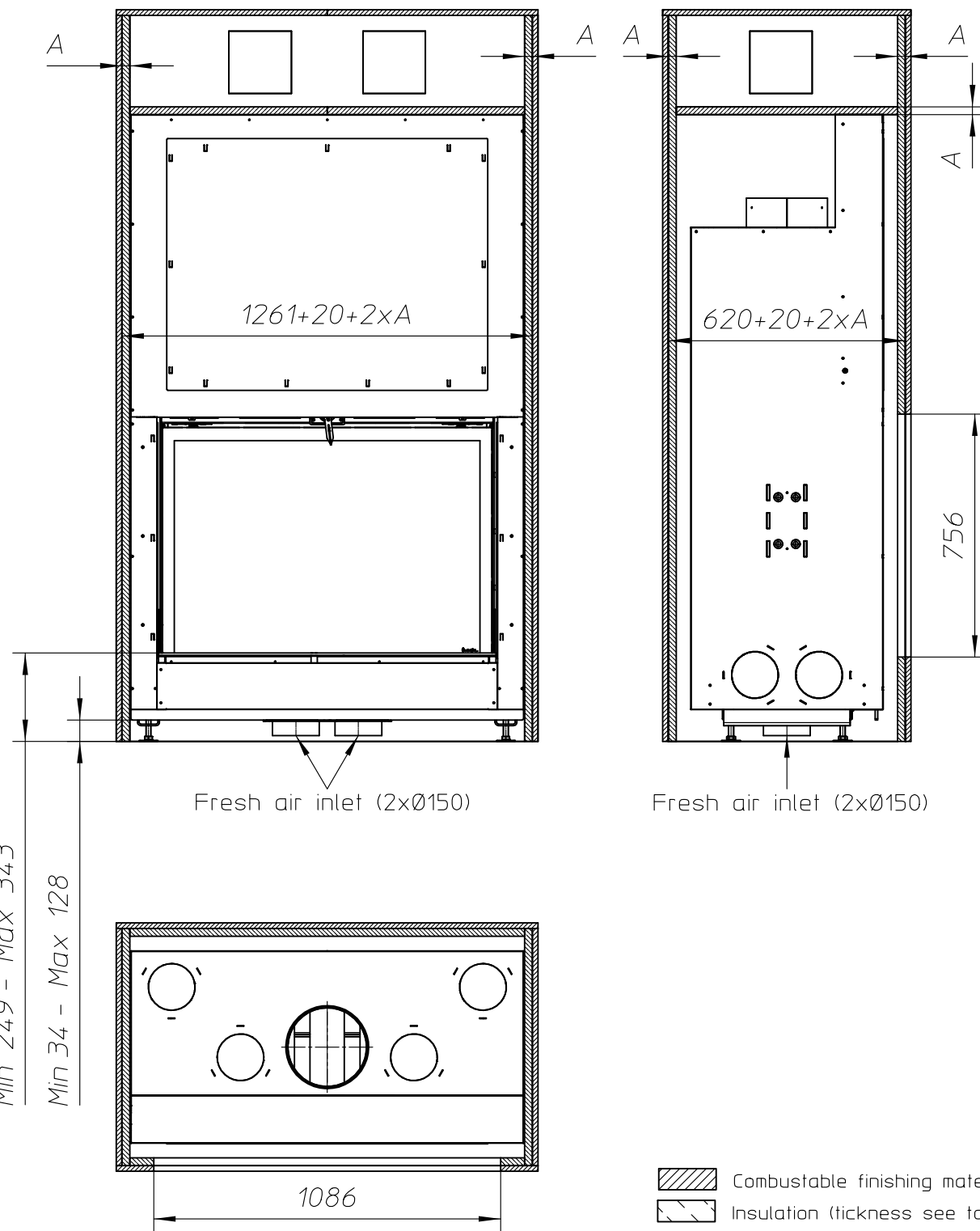
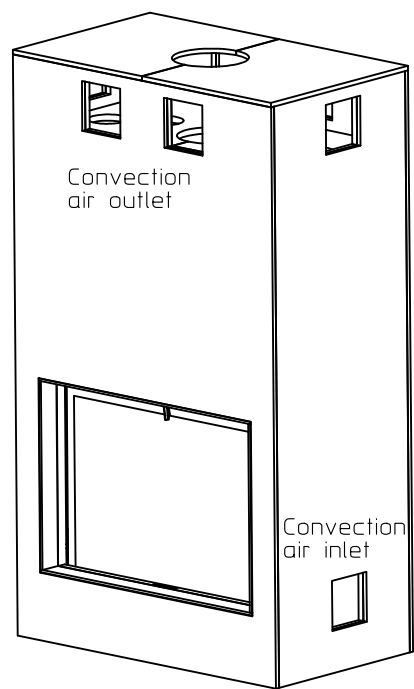
General dimensional tolerances up to 6mm
Metalfire preserves the right to modify specifications without previous notice

Rev.
B

CE

Sheet
1/5

Without finishing frame



ULTIME D^{Patented}

Metalfire

Technical Document

ULTIME D MF 1050-75 WHE 1S BRICK

Prescribed insulation thickness (mm)

Combustable finishing material

Metalfire recommended
SILCA T 300
(TC = 0,09 W/mK)

A = 25mm

Non-combustable finishing material

non-combustable
materials
structural building items
EXCLUDED e.g. load bearing walls

A = 0mm

TC = thermal conductivity

NC = non-combustable

First aid and technical support:

- support@metalfire.eu

- +32 9 261 51 90

scale 1:20

Rev.
B

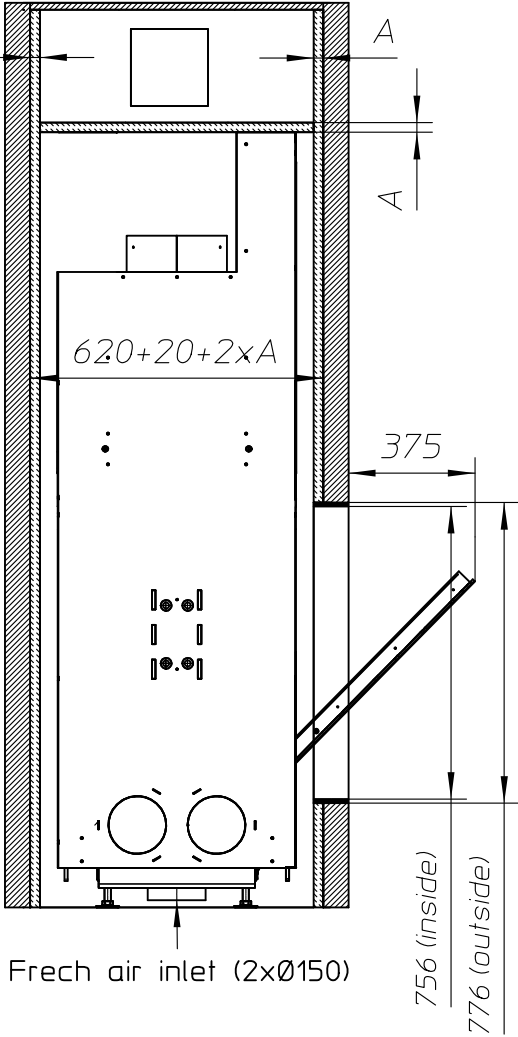
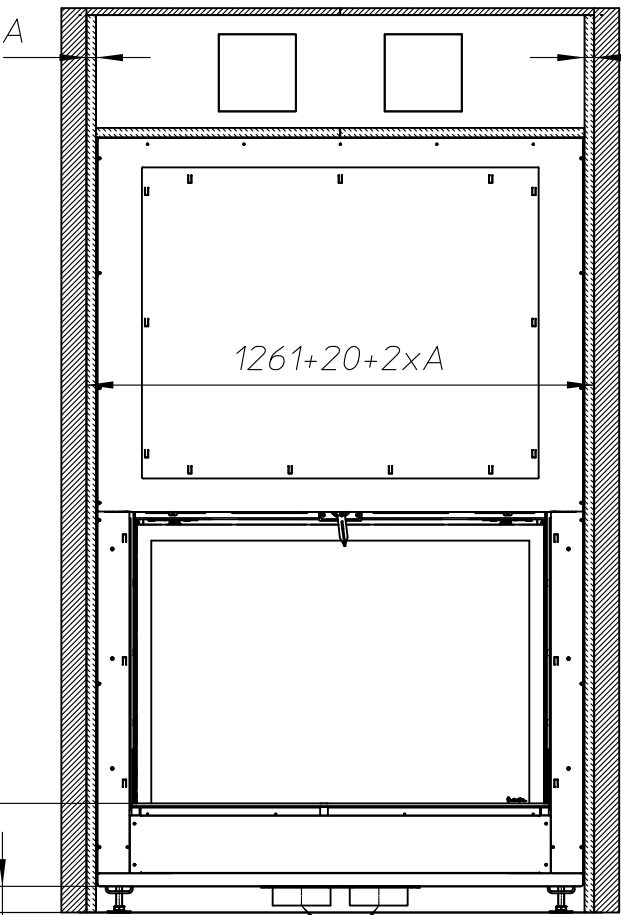
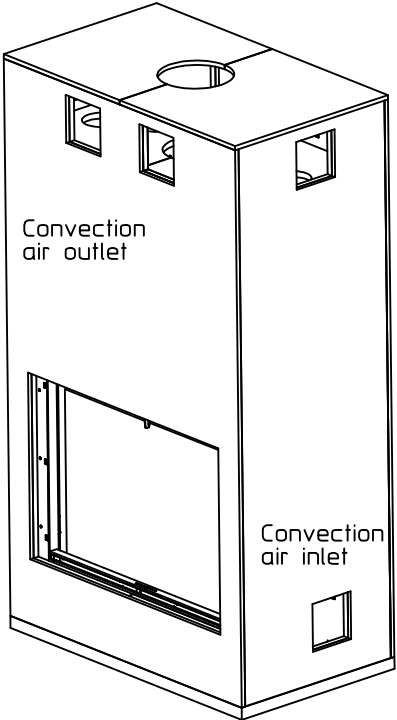
www.metalfire.eu EN 13229

CE

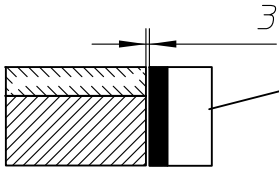
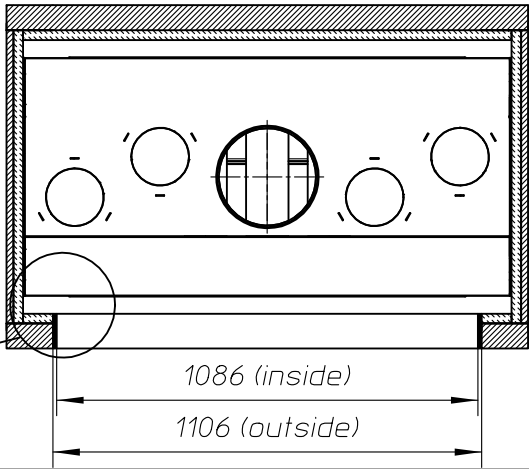
General dimensional tolerances up to 6mm
Metalfire preserves the right to modify specifications without previous notice

Sheet
2/5

With finishing frame 90/10



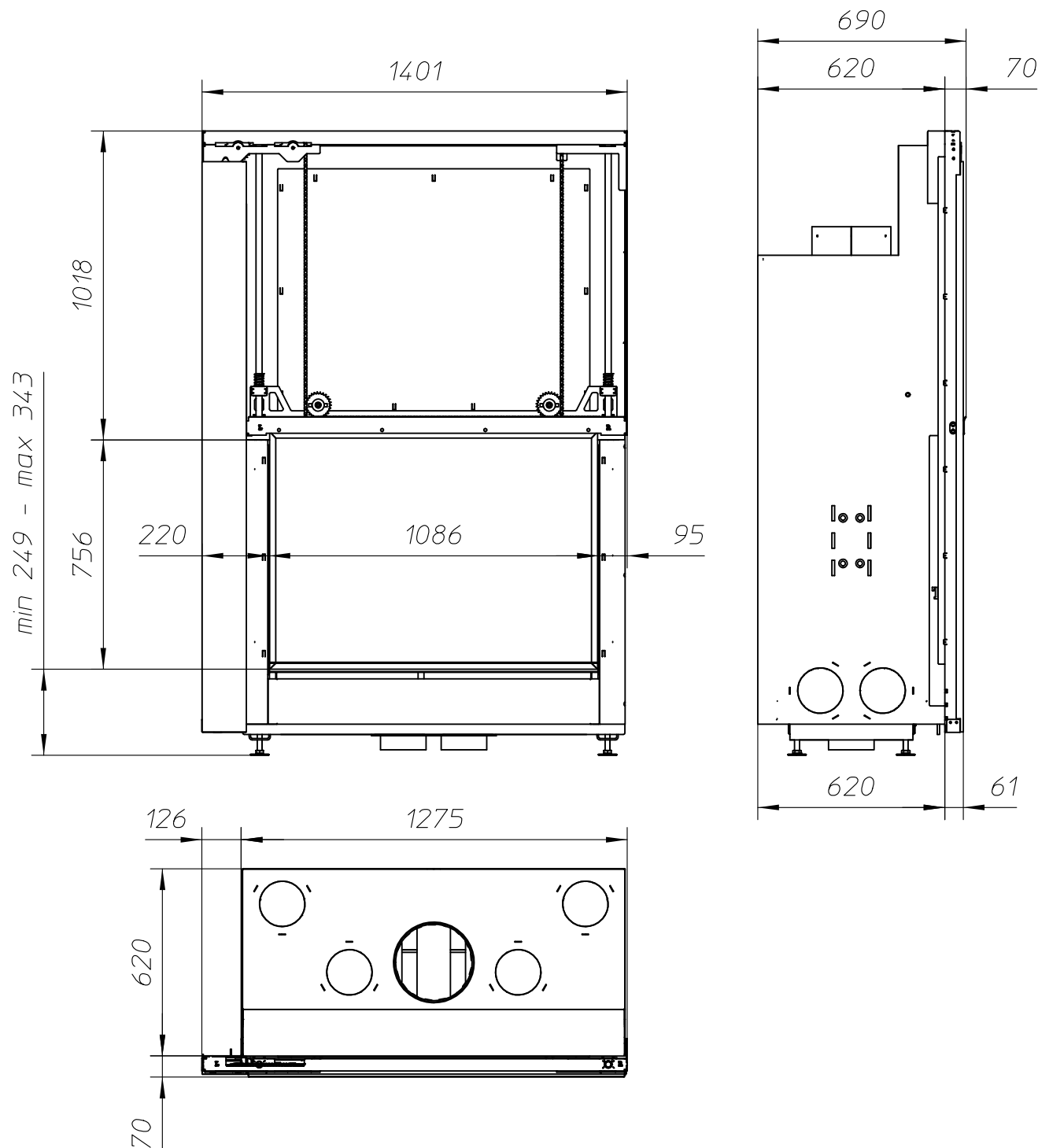
Min 249 - Max 343
Min 34 - Max 128



Combustable finishing material
Insulation (thickness see table)

| | | |
|--|----------|----------------------|
| ULTIME D | | Patented |
| Metalfire | | |
| Technical Document | | |
| ULTIME D MF 1050-75 WHE 1S BRICK | | |
| Prescribed insulation thickness (mm) | | |
| Combustable finishing material | | |
| Metalfire recommended SILCA T 300 (TC = 0,09 W/mK) | A = 25mm | |
| Non-combustable finishing material | | |
| non-combustable materials structural building items EXCLUDED e.g. load bearing walls | A = 0mm | |
| TC = thermal conductivity | | NC = non-combustable |
| First aid and technical support: | | |
| - support@metalfire.eu | | |
| - +32 9 261 51 90 | | |
| scale 1:20 | | Rev. B |
| www.metalfire.eu | | EN 13229 |
| General dimensional tolerances up to 6mm Metalfire preserves the right to modify specifications without previous notice | | Sheet 3/5 |

WITH FIRESCREEN - NO FINISHING FRAME



ULTIME D^{Patented}

Metalfire

Technical Document

ULTIME D MF 1050-75 WHE 1S Brick

Dimensions (mm)

- combustion opening WxH: 1086 x 756
- external WxDxH: 1401 x 690 x 2069
- fresh air intake: 2 x Ø150
- flue gas outlet: Ø250

Technical Data

- ecolabel: A
- capacity: 25.2kW
- efficiency: 79%
- CO (volume with 13%O₂): 0.05%
- dust (volume with 13%O₂): 30mg/Nm³
- weight: 400kg
- convection air inlet: min.700cm² (4 x Ø150)
- convection air outlet: min.700cm² (4 x Ø150)

First aid and technical support:

- support@metalfire.eu
- +32 9 261 51 90

scale 1:20

www.metalfire.eu EN 13229

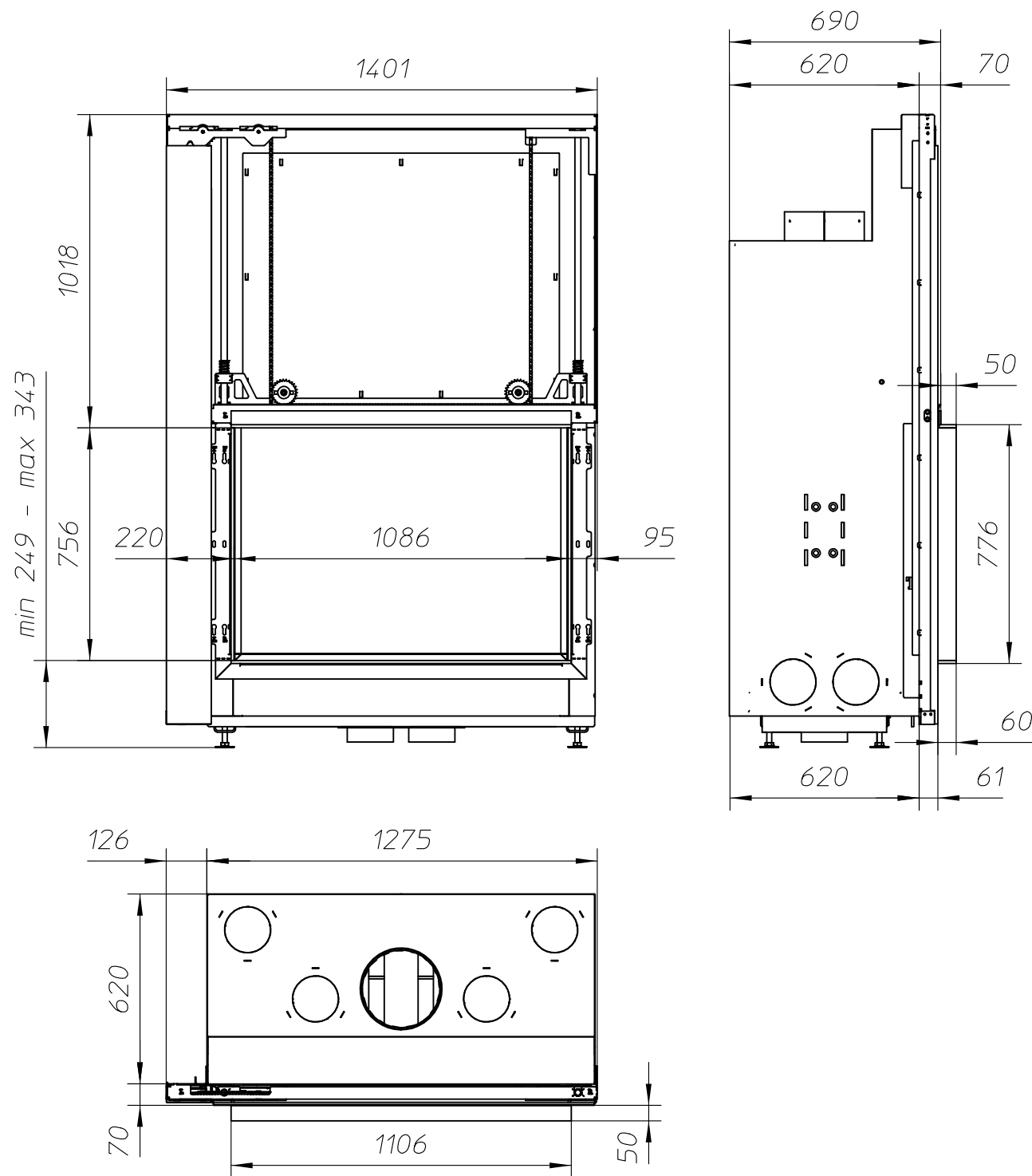
General dimensional tolerances up to 6mm
Metalfire preserves the right to modify specifications without previous notice

Rev.
B

CE

Sheet
4/5

WITH FIRESCREEN AND FINISHING FRAME 120/10



ULTIME D Patented

Metalfire

Technical Document

ULTIME D MF 1050-75 WHE 1S Brick

Dimensions (mm)

- combustion opening WxH: 1086 x 756
- external WxDxH: 1401 x 740 x 2069
- fresh air intake: 2 x Ø150
- flue gas outlet: Ø250

Technical Data

- ecolabel: A
- capacity: 25.2kW
- efficiency: 79%
- CO (volume with 13%O₂): 0.05%
- dust (volume with 13%O₂): 30mg/Nm³
- weight: 400kg
- convection air inlet: min.700cm² (4 x Ø150)
- convection air outlet: min.700cm² (4 x Ø150)

First aid and technical support:

- support@metalfire.eu
- +32 9 261 51 90

scale 1:20

www.metalfire.eu EN 13229

General dimensional tolerances up to 6mm
Metalfire preserves the right to modify specifications without previous notice

Rev.
B

CE

Sheet
5/5